

SPECIFICATION SHEET



APPLICATIONS Plumbing, mechanical, refrigeration, and air conditioning

INSTALLATION Tool-Free, Suited for horizontal pipe installation

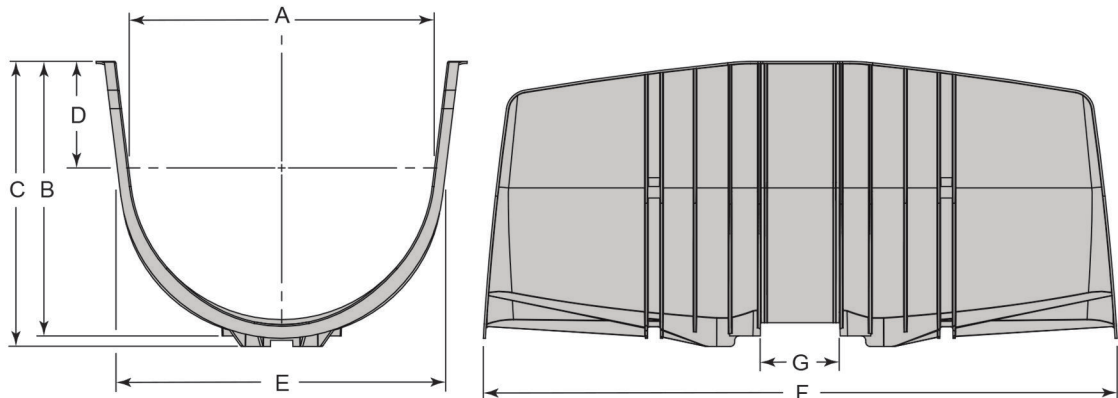
- MATERIAL**
- Polypropylene 20% glass filled
 - UV Resistant
 - Operating temperature -40° to 178°F (-40° to 81°C)
 - Paintable (preserves mechanical properties event after painting)
 - Non-adhesive surface for linear expansion of thermal insulation

CERTIFICATION UL classified for USA (UL-723 (ASTM E 84)) And ULC listed for Canada (ULC-S102.2).



COLOR  SILVER GREY (G)

PART NUMBER	A	B	C	D	E	F	G
IM250G	2.34" (60mm)	1.92" (49mm)	2.33" (59mm)	0.40" (10mm)	2.45" (62mm)	12" (305mm)	1.20" (30mm)
IM350G	3.45" (88mm)	3.17" (81mm)	3.58" (91mm)	1.09" (28mm)	3.56" (90mm)	12" (305mm)	1.48" (38mm)
IM450G	4.5" (114mm)	3.89" (99mm)	4.19" (106mm)	1.17" (30mm)	4.61" (117mm)	12" (305mm)	1.75" (44mm)
IM550G	5.56" (140mm)	4.90" (124mm)	5.20" (132mm)	1.66" (42mm)	5.75" (146mm)	12" (305mm)	1.78" (45mm)
IM650G	6.46" (165mm)	5.96" (151mm)	6.26" (159mm)	2.18" (55mm)	6.75" (171mm)	12" (305mm)	2.08" (53mm)
IM850G	8.65" (219mm)	7.83" (199mm)	8.13" (207mm)	3.04" (77mm)	8.75" (222mm)	18" (457mm)	2.26" (57mm)
IM1050G	10.65" (271mm)	7.80" (198mm)	8.10" (206mm)	1.76" (45mm)	10.59" (269mm)	23" (584mm)	2.26" (57mm)
IM1250G	12.65" (321mm)	9.18" (233mm)	9.48" (241mm)	2.14" (54mm)	12.52" (318mm)	23" (584mm)	2.26" (57mm)

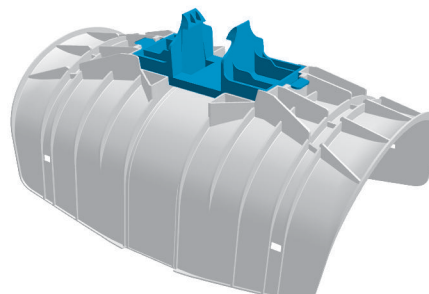
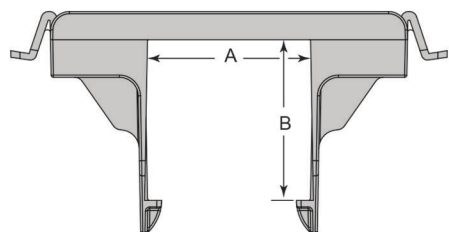




STRUT MOUNT ADAPTOR

PART NUMBER	A	B			
IM30X30G	1 3/16" (30mm)	1 3/16" (30mm)			
IM31X43G	15/64" (31mm)	1 11/16" (43mm)			
IM40X38G	1 9/16" (40mm)	1 1/2" (38mm)			
IM42X20G	1 5/8" (42mm)	13/16" (20mm)			
IM42X42G	1 5/8" (42mm)	1 5/8" (42mm)			
IM4D21G	2 1/8" (54mm)	1 1/16" (27mm)			
IM4D22G	2 1/8" (54mm)	2 1/8" (54mm)			

* Sold by the unit.

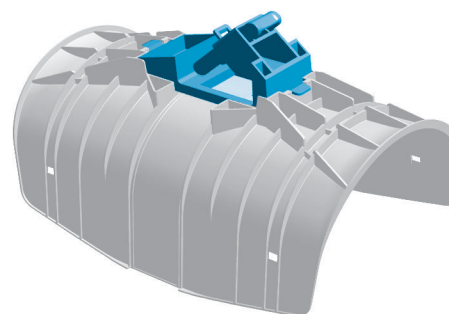
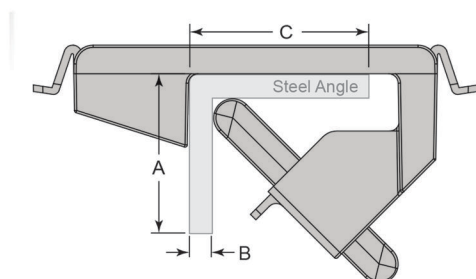


STEEL ANGLE MOUNT ADAPTOR

PART NUMBER	A	B	C
IM2-5/8G	1" (25mm) to 2.62" (66mm)	0.125" (3mm) to 0.625" (16mm)	1" (25mm) to 2.62" (66mm)

*Sold by the unit.

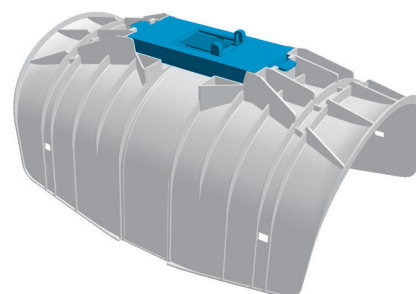
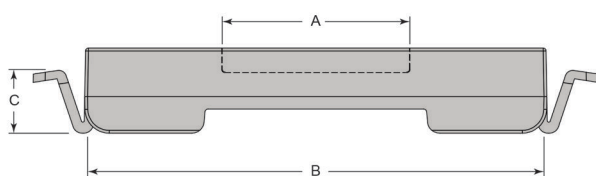
*For steel angle : 0.125" (3mm) to 0.625" (16mm) thick and 1" (25mm) to 2.62" lip (66mm)



CLEVIS U-STRAP MOUNT ADAPTOR

PART NUMBER	A	B	C		
IMCLEVISG	1.9" (48mm)	4.75" (120.6mm)	0.875" (22mm)		

* Sold by the unit

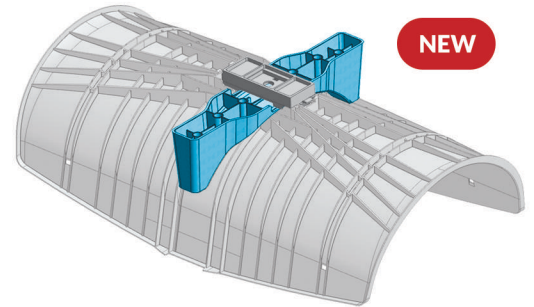
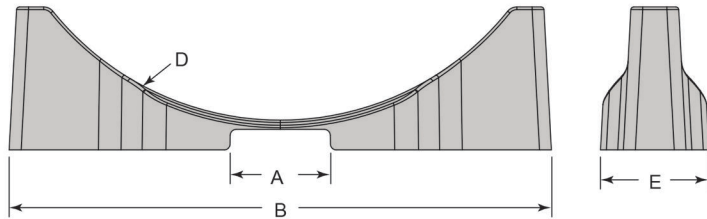




STRUT STABILISATOR

PART NUMBER	A	B	C	D	E
IMSTAB1050G	2.10" (53mm)	10.34" (263mm)	3" (76mm)	R5.13	2.24" (57mm)
IMSTAB1250G	2.10" (53mm)	11.38" (289mm)	3" (76mm)	R6.13	2.28" (58mm)

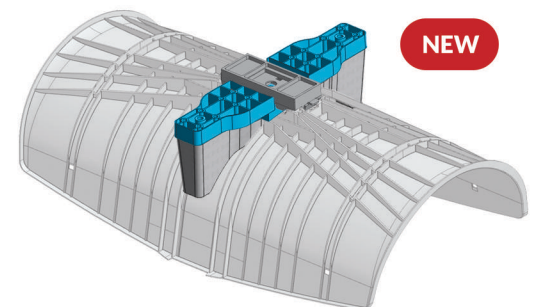
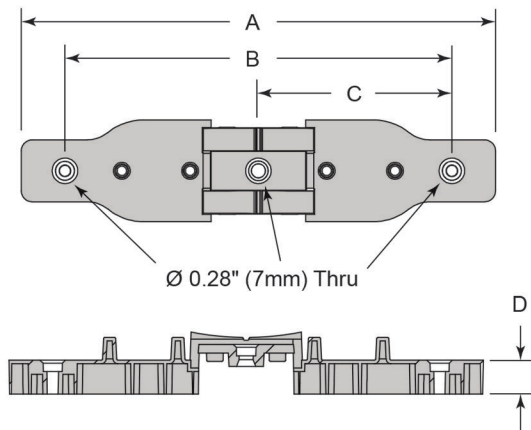
* Sold by the unit.



FLOOR ADAPTOR

PART NUMBER	A	B	C	D
IMFLOOR10-12G	10.42" (265mm)	8.5" (216mm)	4.25" (108mm)	0.75" (19mm)

* Sold by the unit.



H-BEAM ADAPTOR

PART NUMBER	A	B	C
IMHBEAMG	3.5" to 8.87" (89mm to 225mm)	10.01" (254mm)	0.78" (20mm)

* Sold by the unit.

